

# Measurement / Scale

## Long-Term Memory Review – Grade 6 Review 1

1. Convert: 240 mg to \_\_\_\_\_g
2. Name a metric unit that measures capacity. \_\_\_\_\_
3. Explain how to convert feet to inches.

4. Complete this table:

Kilo	Hecto	Deka	Base Unit	Deci	Centi	Milli
.004			4			
1				10,000		

5. Joe and Lola are hanging picture frames. The wall that they are hanging them on is 10 feet long. Nails need to be spaced 30 inches apart. How many nails can they put into the wall to hang pictures?
6. To measure a single serving of juice, which unit would provide the most precise measurement?
  - A) gallons
  - B) pints
  - C) cups
  - D) ounces
  - a) Explain your choice in question 6 above.
  - b) Which would be the most appropriate measurement in question 6 above? Explain your choice.

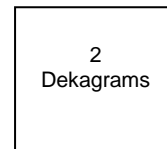
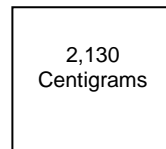
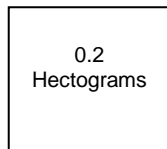
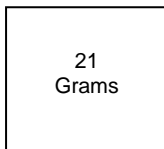
# Measurement / Scale

## Long-Term Memory Review – Grade 6 Review 2

- Convert: 0.0065 mg to \_\_\_\_\_ kg
- Name the 3 most common metric units of measurement. \_\_\_\_\_, \_\_\_\_\_, \_\_\_\_\_
- When changing kiloliters to liters you move the decimal point \_\_\_\_\_ place(s) to the right.
- Estimate the height of an average man in yards.
- Complete this table:

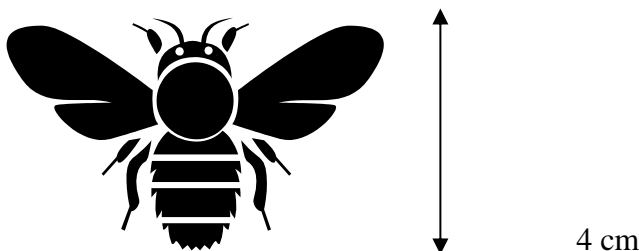
Kilo	Hecto	Deka	Base Unit	Deci	Centi	Milli
	21				210,000	
			0.1			100

- Jim and Jeff are baking cookies. The cookie sheet is 50 cm long. The center of each cookie needs to be spaced 100 mm apart in each row. After baking the cookies, each cookie is 90 mm in diameter. How many cookies can be put in one row?
- To measure the length of a room, which unit would be the most practical measurement?  
 A) millimeter                      B) centimeter                      C) meter                      D) dekameter
- The diagrams below show four measurements of the same object.



Which measurement is most precise?

- A) 0.2 Hectograms    B) 2 Dekagrams    C) 21 Grams    D) 2,130 Centigrams
- The graphic of the bumblebee below is 2 times its actual length. What is the actual length of the bumblebee?



# Measurement / Scale

## Long-Term Memory Review – Grade 6 Review 3

1. Convert: 4,040 kl to \_\_\_\_\_ cl
2. Name the metric unit that measures mass \_\_\_\_\_
3. Explain how you would convert centimeters to kilometers.
4. Estimate the amount of milk in a small bowl of cereal in liters.

5. Complete this table:

Kilo	Hecto	Deka	Base Unit	Deci	Centi	Milli
40			40,000			
0.0002			0.2			

6. Carol and Lisa are planting a garden. The garden is 10 feet long. Seeds need to be spaced 6 inches apart. How many seeds can be planted in a row?
- 7) The diagrams below show four measurements of the same line segment.

2.5  
centimeters

---

25.4  
millimeters

---

0.025  
meters

---

0.003  
dekameters

---

Which measurement is most precise?

- A) 0.003 dekameters    B) 0.025 meters    C) 2.5 centimeters    D) 25.4 millimeters

- 8) The Smithsonian Institute wants to have a model of the Statue of Liberty constructed. The Smithsonian wants the model to be 25 feet tall and 5 feet wide. The original statue is approximately 150 feet tall and 30 feet wide.

a) The torch on the original statue is approximately 15 feet tall. Use this information to find the height of the torch on the model. Show your work.

b) The gift shop at the Smithsonian wants to sell a much smaller model of the statue in its store. The gift shop calls for a model that is only 3 inches wide. Use this information to find the height of the gift shop's model. Show your work and explain your thinking.



# Measurement / Scale

## Long-Term Memory Review – Grade 6 Review 4

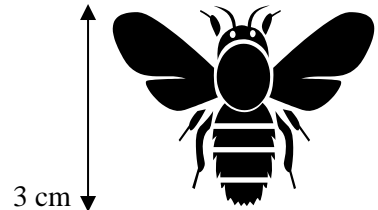
1. Convert: 324g to \_\_\_\_\_cg
2. Name a customary unit that would appropriately measure the mass of a dump truck load. \_\_\_\_\_
3. Estimate the width of your classroom in feet.
4. Complete this table

Kilo	Hecto	Deka	Base Unit	Deci	Centi	Milli
201	2,010					
		0.0201	0.201			

5. A dump truck will hold 3 tons of dirt. A standard pick-up will hold 1500 pounds of dirt. How many times will the pick-up need to be filled to equal one load of the dump truck? (1 ton = 2000 pounds)
 

A) 1    B) 3    C) 4    D) 5

6. The graphic of the bumblebee below is 2 times its actual length. What is the actual length of the bumblebee?



- A) 5 cm    B) 4.5 cm    C) 1.5 cm    D) 1 cm
7. The Smithsonian Institute wants to have a model of the Statue of Liberty constructed. The Smithsonian wants the model to be 50 feet tall and 10 feet wide. The original statue is approximately 150 feet tall and 30 feet wide.
    - a) The torch on the original statue is approximately 15 feet tall. Use this information to find the height of the torch on the model. Show your work.



- b) The gift shop at the Smithsonian wants to sell a much smaller model of the statue in its store. The gift shop calls for a model that is only 3 inches wide. Use this information to find the height of the gift shop’s model. Show your work and explain your thinking.



# Measurement / Scale

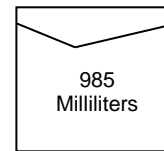
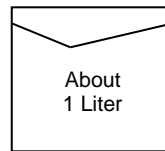
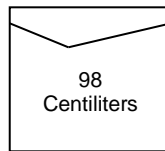
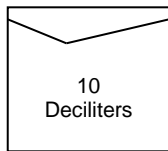
## Long-Term Memory Review – Grade 6

### Quiz

- Convert: 3240 m to \_\_\_\_\_ km
- Name a customary unit that measures capacity. \_\_\_\_\_
- Explain how you would convert grams to kilograms.
- Estimate the height of a classroom in meters.
- Complete this table:

Kilo	Hecto	Deka	Base Unit	Deci	Centi	Milli
3			3000	30,000		
		0.001			1	

- Carol and Lisa are planting a garden. The garden is 5 feet long. Seeds need to be spaced 6 inches apart. How many seeds can be planted in a row?
- To measure the length of a pencil, Which unit would provide the most precise measurement?
  - millimeter
  - centimeter
  - meter
  - dekameter
- The diagram below show four measurements of the same object.



Which measurement is more precise?

- A) About 1 liter      B) 10 deciliters      C) 98 centiliters      D) 985 milliliters

- The Smithsonian Institute wants to have a model of the Statue of Liberty constructed. The Smithsonian wants the model to be 40 feet tall and 8 feet wide. The original statue is approximately 150 feet tall and 30 feet wide.
  - The torch on the original statue is approximately 15 feet tall. Use this information to find the height of the torch on the model. Show your work.



- The gift shop at the Smithsonian wants to sell a much smaller model of the statue in its store. The gift shop calls for a model that is only 6 inches wide. Use this information to find the height of the gift shop's model. Show your work and explain your thinking.



# Measurement / Scale

Long-Term Memory Review – Grade 6

## ANSWERS

### Review 1 Answers

- 1) 0.240 g
- 2) Answers may vary. ie, liter
- 3) multiply by 12
- 4)

Kilo	Hecto	Deka	Base Unit	Deci	Centi	Milli
.004	.04	.4	4	40	400	4000
1	10	100	1000	10,000	100,000	1,000,000

- 5) 3 nails
- 6) D) ounces
  - a) the most precise measurement is the smallest unit.
  - b) Answers may vary. A single serving would most appropriately be measured by ounces because multiple cups would be too much for a single serving.

### Review 2 Answers

- 1) 0.0000000065 kg
- 2) ie., meter, liter, gram (Answers may vary.)
- 3) 3
- 4) 2 yds.
- 5)

Kilo	Hecto	Deka	Base Unit	Deci	Centi	Milli
2.1	21	210	2100	21,000	210,000	2,100,000
0.0001	0.001	0.01	0.1	1	10	100

- 6) 4 cookies
- 7) C) meter
- 8) D) 2,130 centigrams
- 9) 2 cm

### Review 3 Answers

- 1) 40,400,000 cl
- 2) Answers may vary. ie, gram
- 3) move the decimal point 5 places to the left
- 4) Answers may vary
- 5)

Kilo	Hecto	Deka	Base Unit	Deci	Centi	Milli
40	400	4,000	40,000	400,000	4,000,000	40,000,000
0.0002	0.002	0.02	0.2	2	20	200

- 6) 18 seeds
- 7) D) 25.4 millimeters
- 8) a) 2.5 ft.  
b) 15 in tall

# Measurement / Scale

Long-Term Memory Review – Grade 6

## Review 4 Answers

- 1) 32,400 cg
- 2) tons
- 3) Answers may vary.
- 4)

Kilo	Hecto	Deka	Base Unit	Deci	Centi	Milli
201	2,010	20,100	201,000	2,010,000	20,100,000	201,000,000
0.000201	0.00201	0.0201	0.201	2.01	20.1	201

- 5) C) 4
- 6) C) 1.5 cm
- 7) a) 5 ft.  
b)  $1\frac{1}{4}$  ft or 15 in.

## Quiz Answers

- 1) 3.240 km
- 2) Answers may vary. cups, quarts, pints, gallons, ounces
- 3) move the decimal point 3 places to the left
- 4) Answers may vary. Approximately 3 m
- 5)

Kilo	Hecto	Deka	Base Unit	Deci	Centi	Milli
3	30	300	3,000	30,000	300,000	3,000,000
0.00001	0.0001	0.001	0.01	0.1	1	10

- 6) 9 seeds
- 7) A) millimeter
- 8) D) 985 milliliters
- 9) a) 4 ft.  
b)  $2\frac{1}{2}$  ft or 30 in.