

Cow Eye Dissection Data Sheet

Pre Lab:

The evening prior to the lab, visit and read the following website:

<http://www.cas.vanderbilt.edu/bsci111b/eye/cow-eye/cow-eye-dissection.htm>

External Observations:

1. List three observations you made when you examined the surface of the eye:

- a. _____
- b. _____
- c. _____

Sketch the external anatomy of the eye and label the following.

- a. cornea
- b. sclera
- c. optic nerve
- d. iris
- e. Muscle remnant



External Observations:

2. Cut through the eye as shown on the instruction sheet.

3. Name the three layers you sliced through when you cut across the top of the eye:

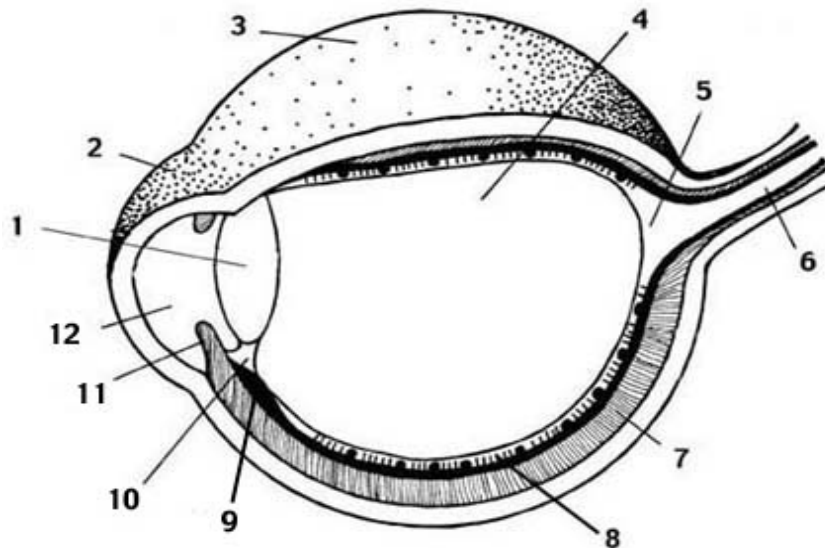
_____ , _____ , _____

4. Match the following parts of the eye to their function: (ciliary body, pupil, sclera, iris, retina, lens, & choroid)

- _____ Contains the photoreceptors for vision.
- _____ The colored portion of the eye.
- _____ This structure changes shape to focus light on the retina.
- _____ The opening in the iris through which light passes.
- _____ The iridescent layer in nocturnal animals.
- _____ Consists of muscles, which control and shape the lens.
- _____ The white of the eye.

Cow Eye Dissection Data Sheet

4. Label the parts of the eye below.



1. _____
2. _____
3. _____
4. _____
5. _____
6. _____
7. _____
8. _____
9. _____
10. _____
11. _____
12. _____

Analysis Questions:

1. What is the function of the pupil? _____
2. What are the photoreceptors in the retina called? _____
3. The region of the retina where its nerve fibers and blood vessels enter the optic nerve is the small optic disk, which contains no rods or cones. Why is the optic disc called the blind spot? _____

4. What would be the result of the cornea becoming cloudy during an animals lifetime?